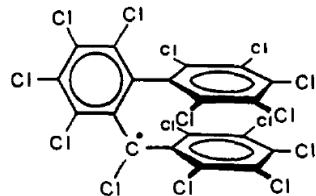
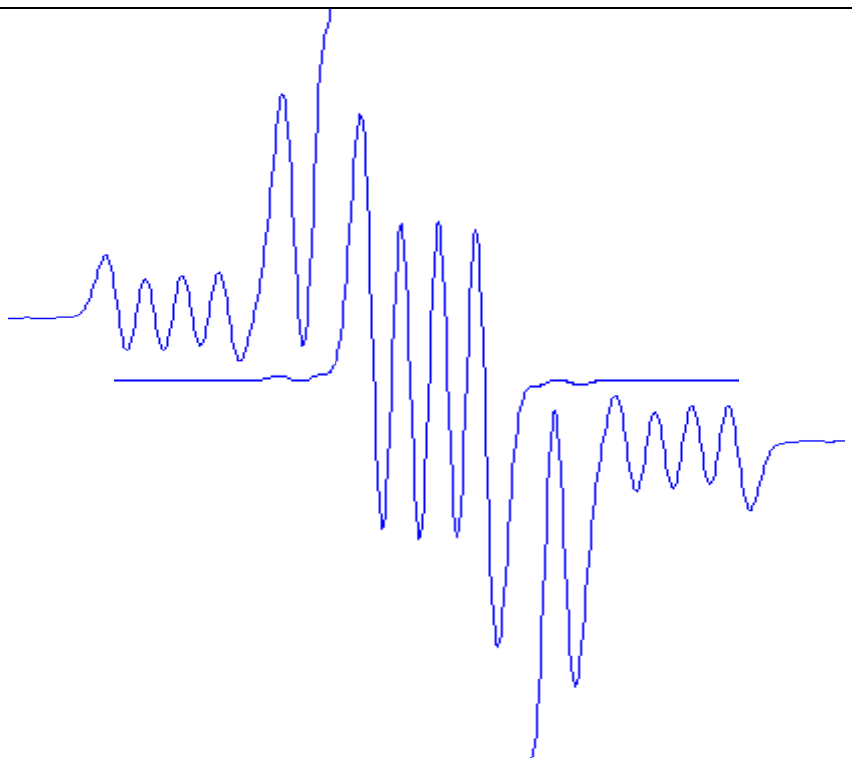


Experimental



Simulat



Referència:

R-PDM008

Compost:

PODM

(percloro-2-fenildifenilmetil)[•]

(perchloro-2-phenyldiphenylmethyl)[•]

Condicions experimentals:

CCl₄

rt

Paràmetres:

$a(1\text{Cl}): 2,49$

$a(^{13}\text{C}_a): 37,05$

$a(^{13}\text{C}_b): 12,11$

$g = 2,0055$

$\Delta H_{pp} \text{ (G)} = 1,85$