

Referència:

R-PTM011

Compost:

(pNH₄CO₂)PTM

(tetradecachlorotriphenylmethyl-
4-carboxilat d'amoni)⁺

(ammonium tetradecachloro
triphenylmethyl-4-carboxylate)⁺

Condicions experimentals:

CCl₄

rt

Paràmetres:

$a(^{13}\text{C}_a)$: 29,68

$a(^{13}\text{C}_b)$: 12,34

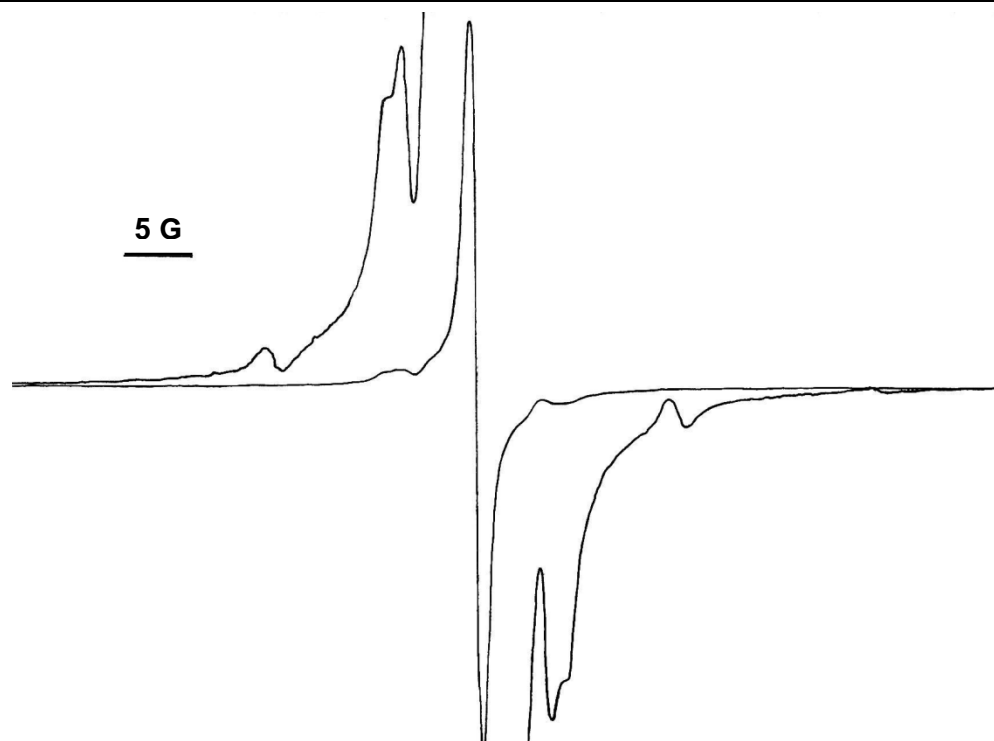
$a(^{13}\text{C}_o)$: 9,90

g = 2,0027

ΔH_{pp} (G) = 1,32

J. Org. Chem., **1982**, *47*, 259-
264

Experimental



Simulat

