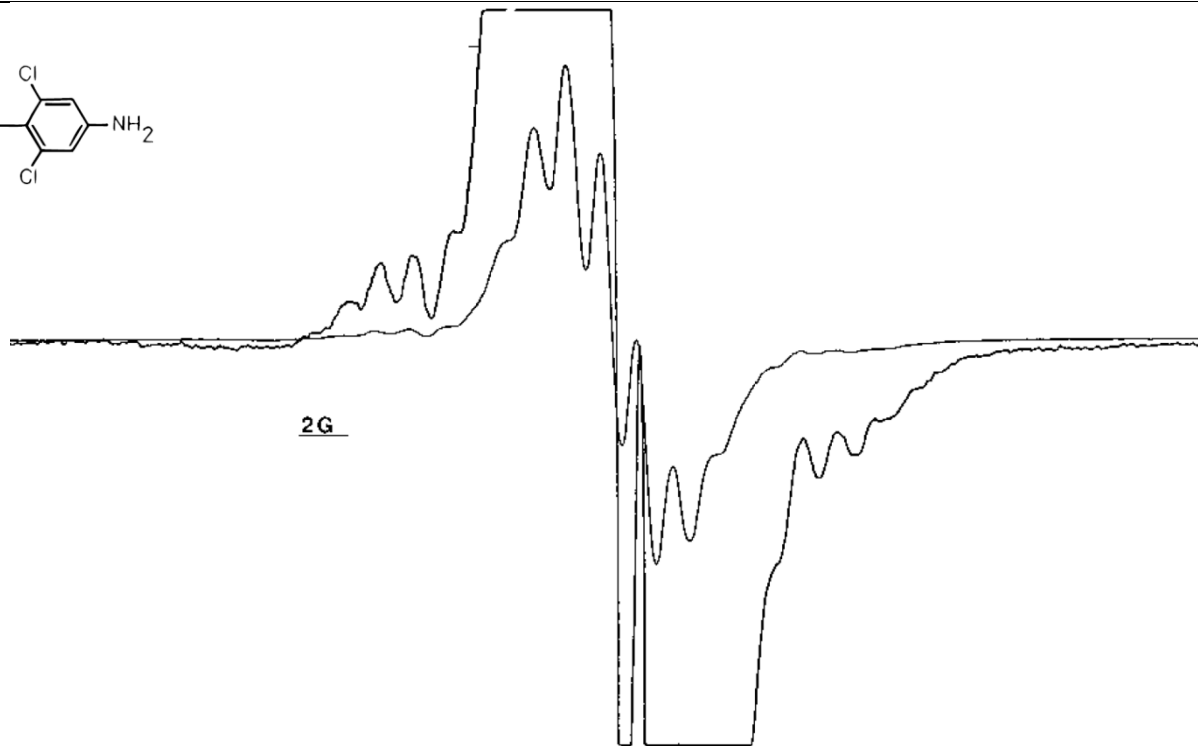
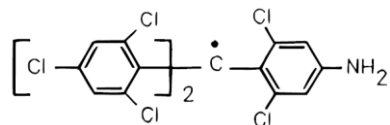
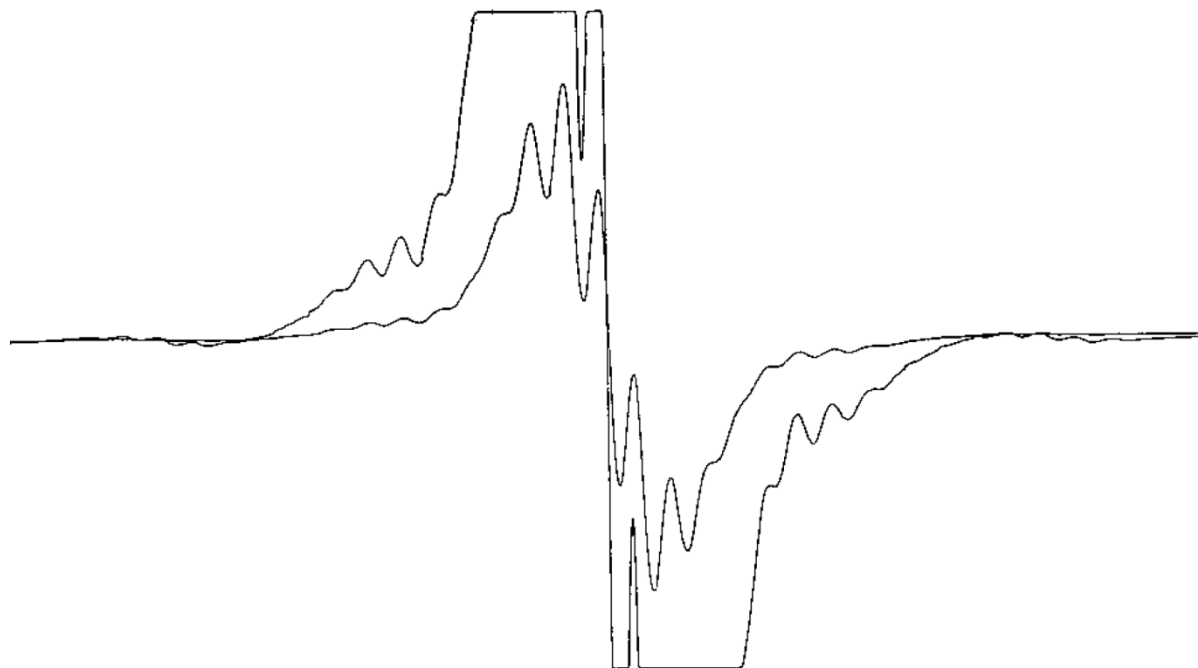


Experimental



Simulat



Referència:

R-TTM004

Compost:

(pNH<sub>2</sub>)TTM

((4-amino-2,6-diclorofenil)bis(2,4,6-triclorofenil)metil)<sup>•+</sup>

((4-amino-2,6-dichlorophenyl)bis(2,4,6-trichlorophenyl)methyl)<sup>•+</sup>

Condicions experimentals:

CH<sub>2</sub>Cl<sub>2</sub>

-100° C (173 K)

Paràmetres:

a(1N): 1,10

a(6H): 1,10

a(<sup>13</sup>C<sub>a</sub>): 28,2

a(<sup>13</sup>C<sub>b</sub>): 12,6

a(<sup>13</sup>C<sub>o</sub>): 10,5

g= 2,0030

ΔH<sub>pp</sub> (G) = 0,82