

Referència: R-PCC003

Compost:
(percloro(2-naftil)metil)[•]
(perchloro(2-naphtyl)methyl)[•]

Condicions experimentals:

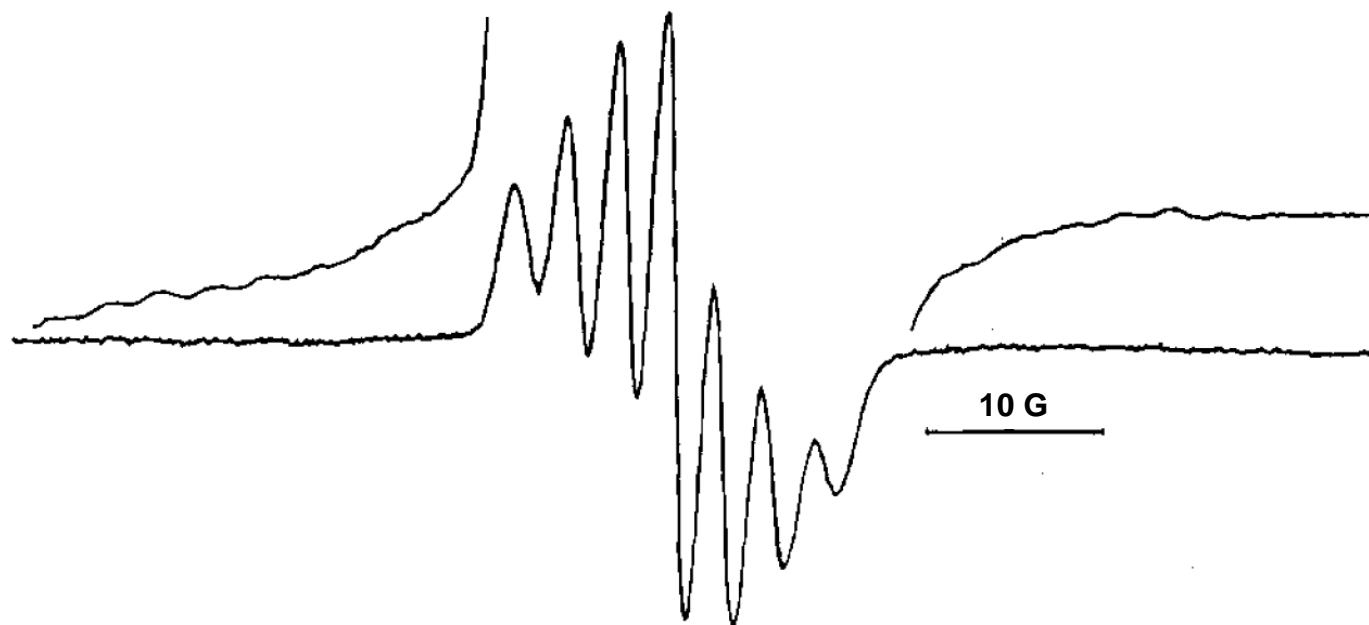
CCl₄
rt

Paràmetres:

$a(2\text{Cl})$: 2,85
 $a(^{13}\text{C}_\alpha)$: 58,1
 g = 2,0076
 ΔH_{pp} (G) = 1,5

J. Org. Chem., 1995, 60, 2721

Experimental



Simulat

