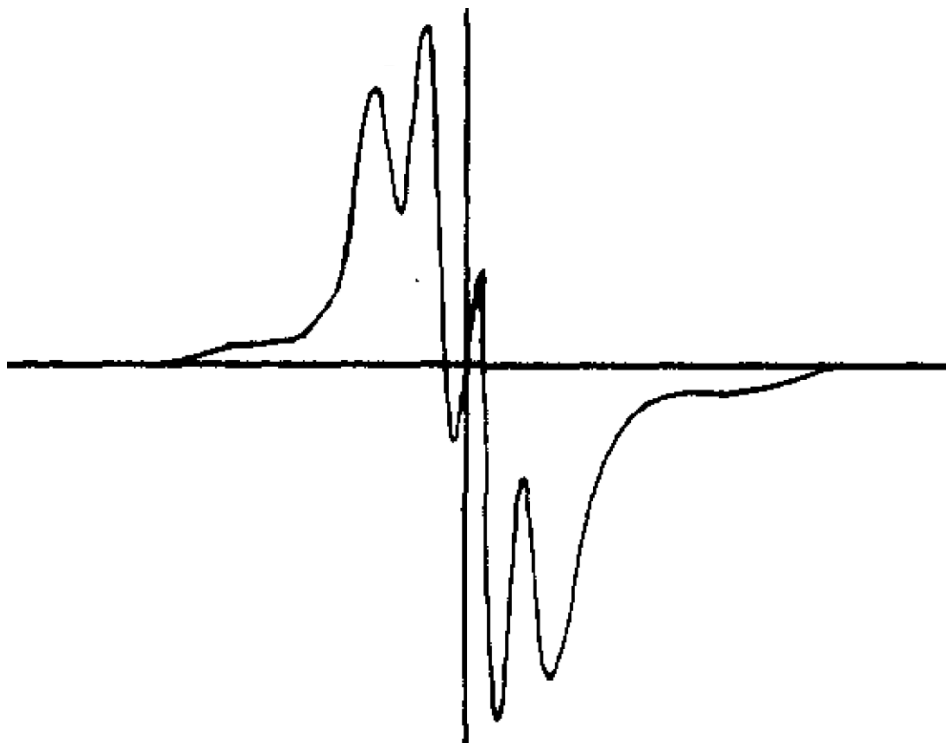


Experimental



Referència:

R-PTM043

Compost:

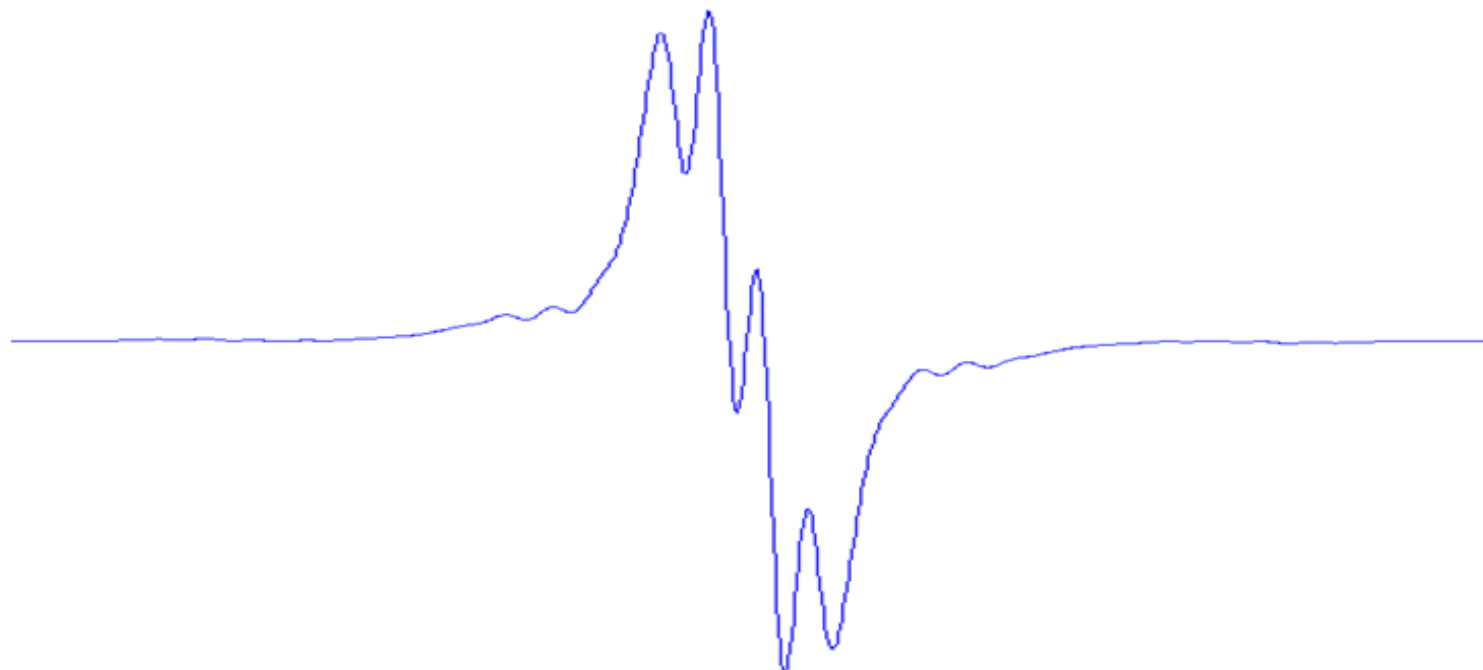
(perclorodifenil(4-piridil)metil)<sup>•</sup>  
(perchlorodiphenyl(4-pyridyl)  
methyl)<sup>•</sup>

Condicions experimentals:

H<sub>2</sub>SO<sub>4</sub>

rt

Simulat



Paràmetres:

a(N): 1,36

a(H): 1,43

a(<sup>13</sup>C<sub>α</sub>): 29,5

a(3<sup>13</sup>C<sub>β</sub>): 11,8

a(6<sup>13</sup>C<sub>o</sub>): 9,5

g= 2,0023

ΔH<sub>pp</sub> (G) = 1,14